

985444
RADIO ANTENNA INSTRUCTION SHEET
 CORVAIR 95

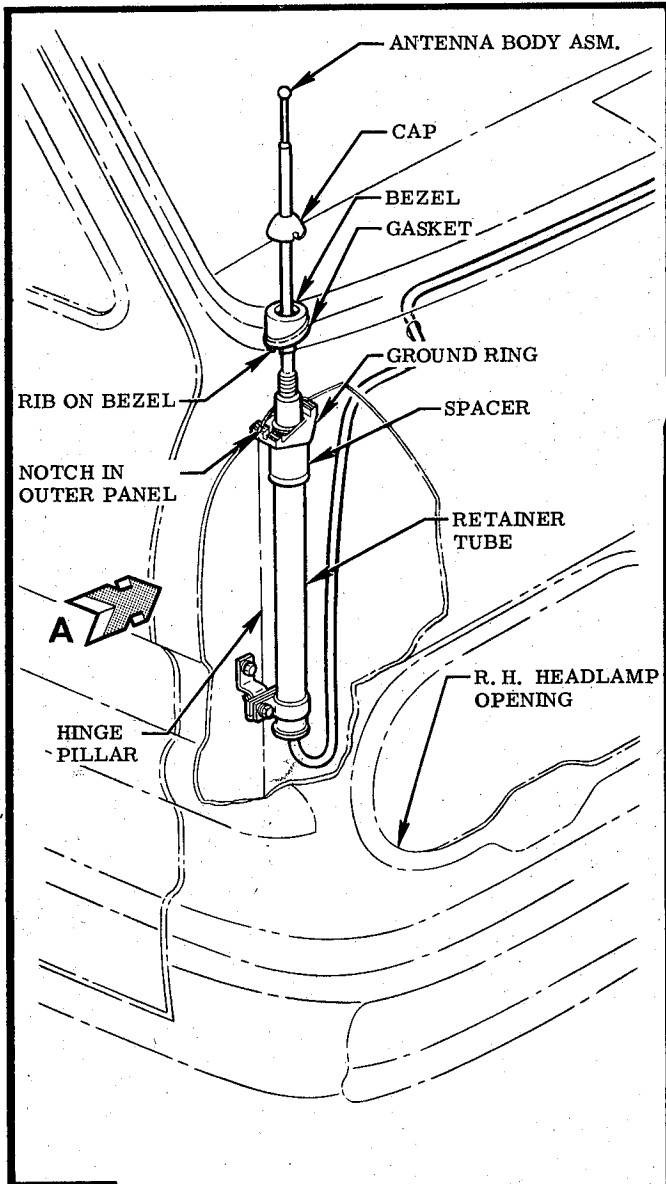


FIG. 1 ANTENNA MOUNTING

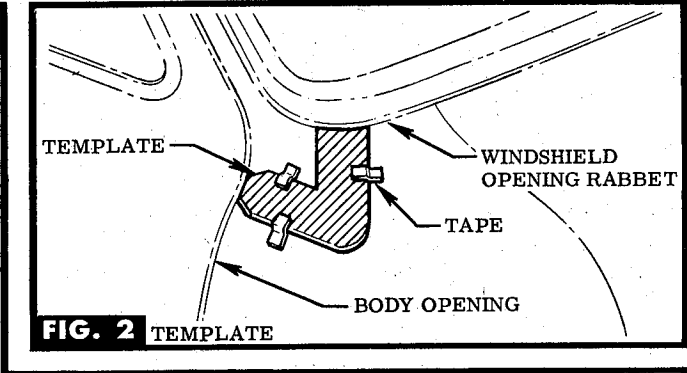
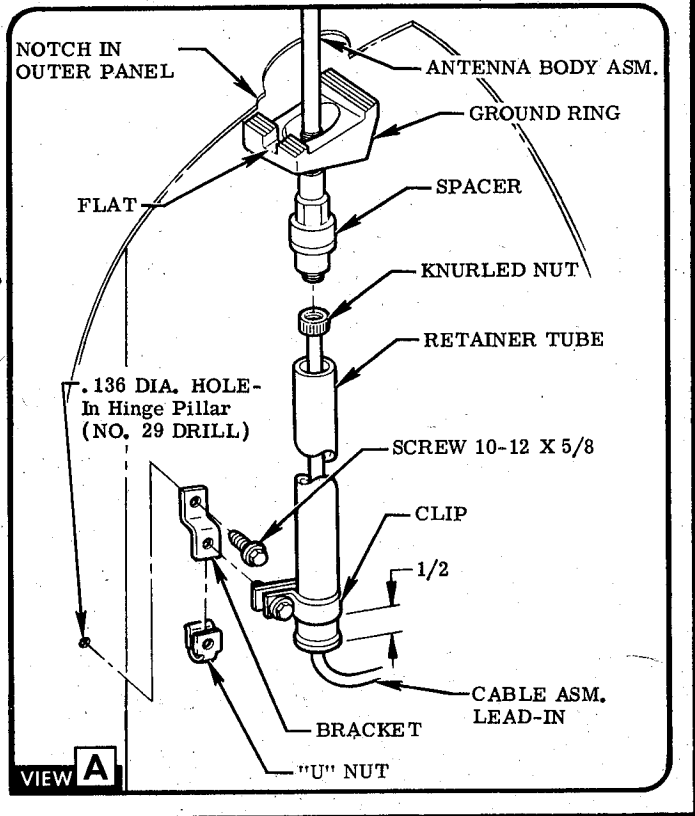


FIG. 2 TEMPLATE



VIEW A

STEP 1 ALIGN TEMPLATE ON RIGHT HAND BODY FRONT OUTER PANEL, TAPE IN PLACE, CENTER PUNCH & DRILL AS INDICATED ON TEMPLATE. REMOVE ANY RESULTANT BURRS. SEE FIG. 2.

STEP 2 REMOVE RIGHT HAND HEADLAMP.

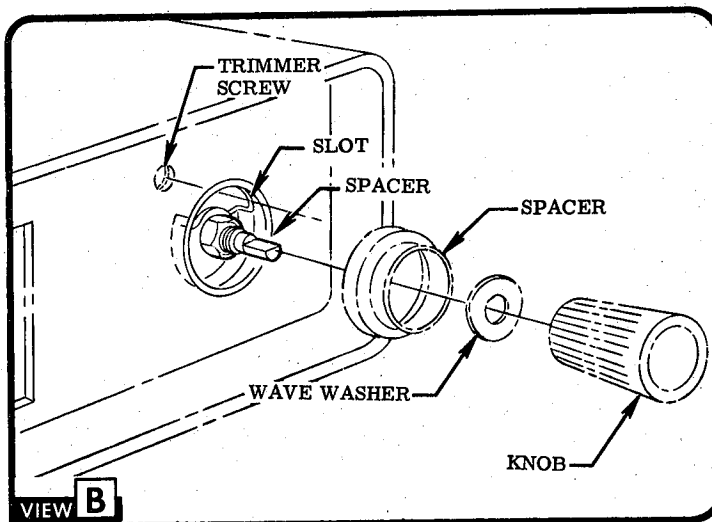
STEP 3 SLIDE SPACER & GROUND RING OVER ANTENNA BODY ASSEMBLY. SEE VIEW A.

STEP 4 INSERT ANTENNA BODY ASM. THRU HEADLAMP OPENING & UP THRU HOLE IN OUTER PANEL. ALIGN FLAT ON GROUND RING UNDER NOTCH IN OUTER PANEL. SEE VIEW A.

STEP 5 SUB-ASSEMBLE GASKET & BEZEL. PLACE GASKET, BEZEL & CAP ONTO ANTENNA BODY ASM., POSITION RIB ON BEZEL INTO NOTCH IN OUTER PANEL. SECURE CAP WITH SPANNER WRENCH. SEE FIG. 1 & VIEW A.

STEP 6 INSERT CABLE ASM. LEAD-IN THRU RETAINER TUBE & CAREFULLY TIGHTEN KNURLED NUT TO ANTENNA BODY ASM. WITH GAS PLIERS. SCREW RETAINER TUBE ONTO ANTENNA BODY ASSEMBLY. SEE VIEW A.

STEP 7 ASSEMBLE CLIP, BRACKET & "U" NUT TO RETAINER TUBE AT DIMENSION SHOWN WITH ONE OF PROVIDED SCREWS. USING BRACKET AS A TEMPLATE, DRILL HOLE IN HINGE PILLAR & ATTACH BRACKET TO PILLAR WITH REMAINING SCREW. SEE FIG. 1 & VIEW A.



CAUTION After assembly make sure the antenna cable is positioned AWAY from existing vehicle wiring.

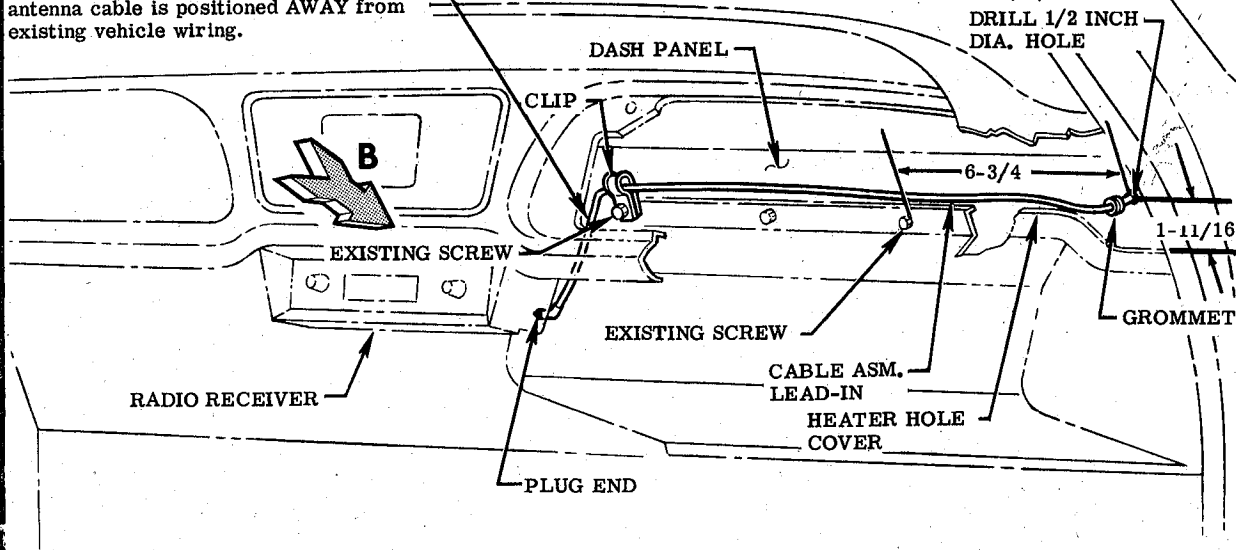


FIG. 3 CABLE ASSY. LEAD-IN

STEP 8 REMOVE INSTRUMENT PANEL COMPARTMENT. LOCATE & DRILL HOLE IN DASH PANEL FROM INNER SIDE THRU INSTRUMENT PANEL COMPARTMENT OPENING. SEE FIG. 3.

STEP 9 ROUTE PLUG END OF CABLE ASM. THRU THE DRILLED HOLE. SEE FIG. 3. **CAUTION** Do not kink or bend cable asm. sharply at any time.

STEP 10 SLIDE GROMMET OVER PLUG END OF CABLE ASM. & SNAP INTO HOLE IN DASH PANEL. SEE FIG. 3.

STEP 11 ROUTE CABLE ASM. ACROSS TOP OF HEATER HOLE COVER & SECURE WITH CLIP & EXISTING SCREW.

PLUG INTO REAR OF RADIO RECEIVER. SEE FIG. 3.

STEP 12 REMOVE EXISTING KNOB, WAVE WASHER & SPACER FROM RIGHT HAND RADIO RECEIVER CONTROL TO GAIN ACCESS TO ANTENNA TRIMMER SCREW. SEE VIEW B.

STEP 13 ADJUST ANTENNA; TUNE DIAL TO WEAK STATION BETWEEN 800 & 1000-KC WITH VOLUME TO OR NEAR MAXIMUM. ADJUST TRIMMER SCREW FOR HIGHEST VOLUME AT SPEAKER. SEE VIEW B. **NOTE** Adjust screw thru slot in spacer.

STEP 14 REPLACE ALL PARTS PREVIOUSLY REMOVED.